



Features

- Low power consumption
- Low voltage drop
- Low temperature coefficient
- Low Quiescent Current: 3uA at 6V
- Output voltage accuracy: tolerance $\pm 2\%$

Applications

- Battery-powered equipment
- Reference voltage sources
- Cameras, video cameras
- Portable AV systems
- Mobile phones
- Portable games

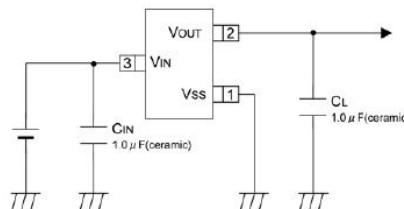
General Description

TX6206 series are a highly precise, lower consumption, 3 terminal, positive voltage regulators manufactured using CMOS and laser trimming technologies. The series provides large currents with a significantly small dropout voltage .

The TX6206 consists of a current limiter circuit, a driver transistor, a precision reference voltage and an error correction circuit. The series is

compatible with low ESR ceramic capacitors. The current limiter's foldback circuit operates as a short circuit protection as well as the output current limiter for the output pin. Output voltages are internally by laser trimming technologies. It is selectable in 0.1V increments within a range of 1.2V to 5.0V. TX6206 series are available in SOT-23 , SOT23-3and SOT-89 packages.

Typical Application



Order Information

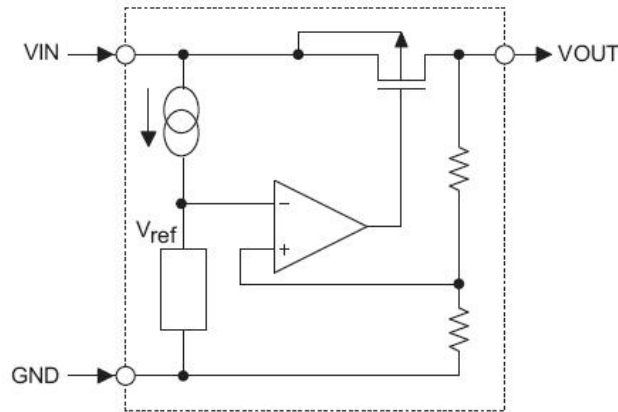
TX6206-①②③④

| Designator | Symbol | Description |
|------------|---------|--------------------------|
| ①② | Integer | Output Voltage(1.2~5.0V) |
| ③ | N | Package:SOT23 |
| | M | Package:SOT23-3 |
| | P | Package:SOT89A |
| | P1 | Package:SOT89B |
| ④ | R | RoHS / Pb Free |
| | G | Halogen Free |

Note: "①②" stands for output voltages. Other voltages can be specially customized

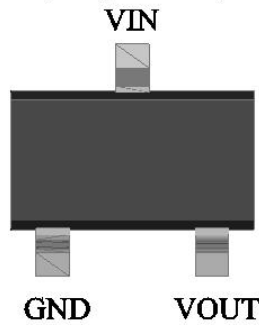


Block Diagram

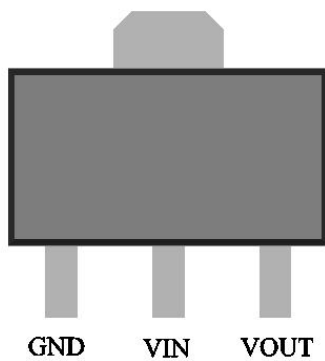


Pin Assignment

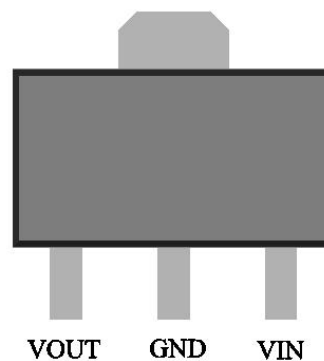
**SOT23-3 and SOT23
(Top view)**



SOT89 A (Top view)

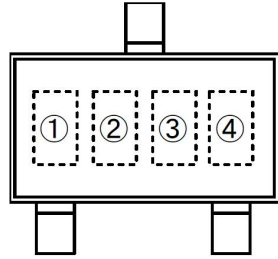


SOT89 B (Top view)

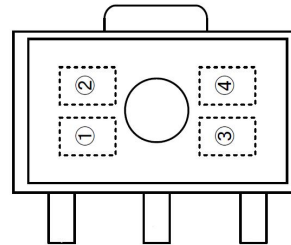




Marking Rule



SOT-23
(TOP VIEW)



SOT-89
(TOP VIEW)

① represents product number

| MARK | PRODUCT SERIES |
|------|----------------|
| 6 | TX6206**** |

② represents 3 pins regulator

| MARK | | PRODUCT SERIES |
|------------------|-------------------|----------------|
| VOLTAGE=0.1~3.0V | VOLTAGE=3.1V~6.0V | |
| 5 | 6 | TX6206 |

③ represents output voltage

| MARK | VOLTAGE(V) | | | MARK | VOLTAGE(V) | | |
|------|------------|-----|---|------|------------|-----|---|
| 0 | - | 3.1 | - | F | 1.6 | 4.6 | - |
| 1 | - | 3.2 | - | H | 1.7 | 4.7 | - |
| 2 | - | 3.3 | - | K | 1.8 | 4.8 | - |
| 3 | - | 3.4 | - | L | 1.9 | 4.9 | - |
| 4 | - | 3.5 | - | M | 2.0 | 5.0 | - |
| 5 | - | 3.6 | - | N | 2.1 | - | - |
| 6 | - | 3.7 | - | P | 2.2 | - | - |
| 7 | - | 3.8 | - | R | 2.3 | - | - |
| 8 | - | 3.9 | - | S | 2.4 | - | - |
| 9 | - | 4.0 | - | T | 2.5 | - | - |
| A | - | 4.1 | - | U | 2.6 | - | - |
| B | 1.2 | 4.2 | - | V | 2.7 | - | - |
| C | 1.3 | 4.3 | - | X | 2.8 | - | - |
| D | 1.4 | 4.4 | - | Y | 2.9 | - | - |
| E | 1.5 | 4.5 | - | Z | 3.0 | - | - |

④ X



Absolute Maximum Ratings

| Parameter | Symbol | Ratings | Units | |
|-----------------------------|------------------|---|-------|---|
| Input Voltage | V _{IN} | 8 | V | |
| Output Current | I _{OUT} | 300* | mA | |
| Output Voltage | V _{OUT} | V _{SS} -0.3~V _{IN} +0.3 | V | |
| Power Dissipation | SOT-23 | P _d | 0.20 | W |
| | SOT23-3 | | 0.25 | W |
| | SOT-89 | | 0.50 | W |
| | USP-6B | | 0.10 | W |
| | TO-92 | | 0.50 | W |
| Operating Temperature Range | T _{opr} | -40~+85 | °C | |
| Storage Temperature Range | T _{stg} | -55~+125 | °C | |

*I_{OUT}=P_d/(V_{IN}-V_{OUT})

Electrical Characteristics

TX6206 for any output voltage

(Ta=25°C)

| Parameter | Symbol | Conditions | Min. | Typ. | Max. | Unit |
|---|--|---|------------------------|------|------------------------|--------|
| Output Voltage | V _{out} | V _{in} =V _{out} +1V 1.0mA≤I _{out} ≤30mA | V _{out} ×0.98 | -- | V _{out} ×1.02 | V |
| Output Current*1 | I _{out} | V _{in} -V _{out} =1V | -- | 300 | -- | mA |
| Low dropout*2 | V _{drop} | Refer to the next table | | | | |
| Line Regulation | ΔV _{out1} /(V _{in} -V _{out}) | 1.6V≤V _{in} ≤8V I _{out} =40mA | -- | 0.05 | 0.2 | %/V |
| Load Regulation | ΔV _{out} /ΔI _{out} | V _{in} =V _{out} +1V 1.0mA≤I _{out} ≤80mA | -- | 12 | 30 | mV |
| Output voltage Temperature Coefficiency | ΔV _{out} /(Ta·V _{out}) | I _{out} =30mA 0°C≤Ta≤70°C | -- | ±100 | -- | Ppm/°C |
| Supply Current | I _{ss} | -- | -- | 3 | 5 | uA |
| Input Voltage | V _{in} | -- | -- | 6 | 8 | V |
| PSRR | PSRR | F=1KHz V _{in} =V _{out} +1V | -- | 50 | -- | dB |
| Output Noise | EN | BW=10Hz~100KHz | -- | 30 | -- | uVrms |

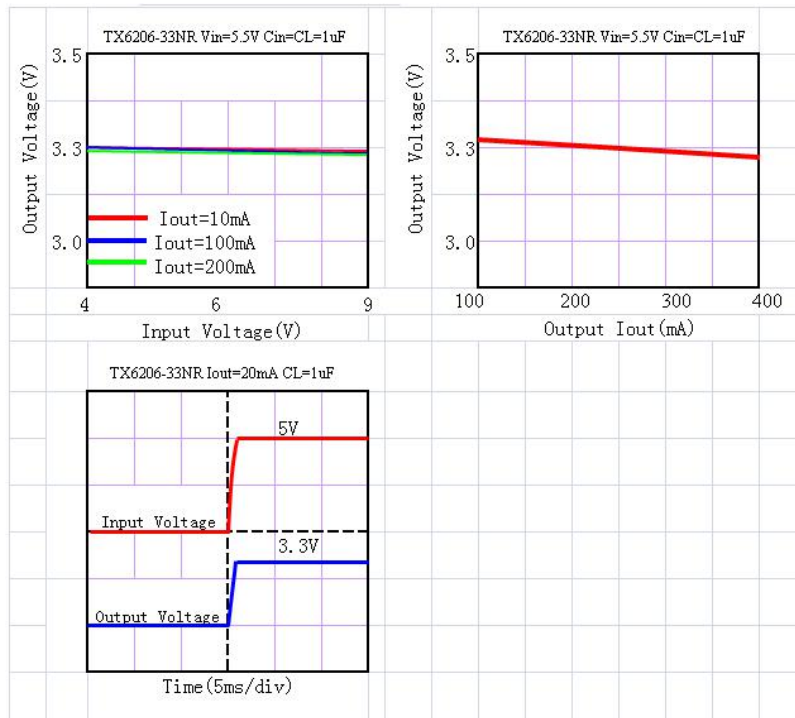


Electrical Characteristics by Output Voltage:

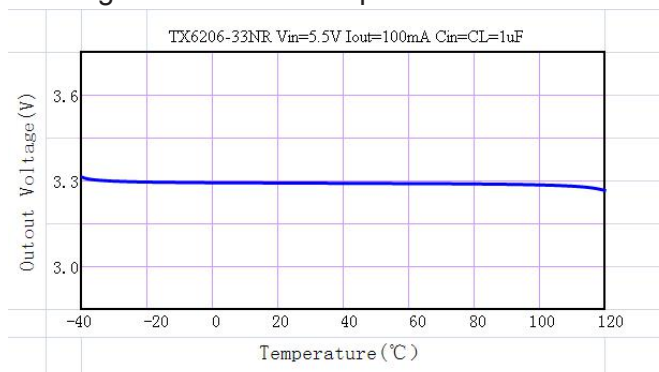
| Output Voltage Vout(V) | Dropout Voltage Vdif (V) | | |
|------------------------|--------------------------|------|------|
| | Conditions | Typ. | Max. |
| Vout≤1.5V | Iout=100 mA | 0.35 | 0.57 |
| 1.8 ≤ Vout ≤ 2 | | 0.28 | 0.42 |
| 2.8 ≤ Vout ≤ 5.0 | | 0.19 | 0.35 |

Typical Performance Characteristics

(1) Output Voltage vs Input voltage and Output Voltage vs. Output Current and Input Transient Response

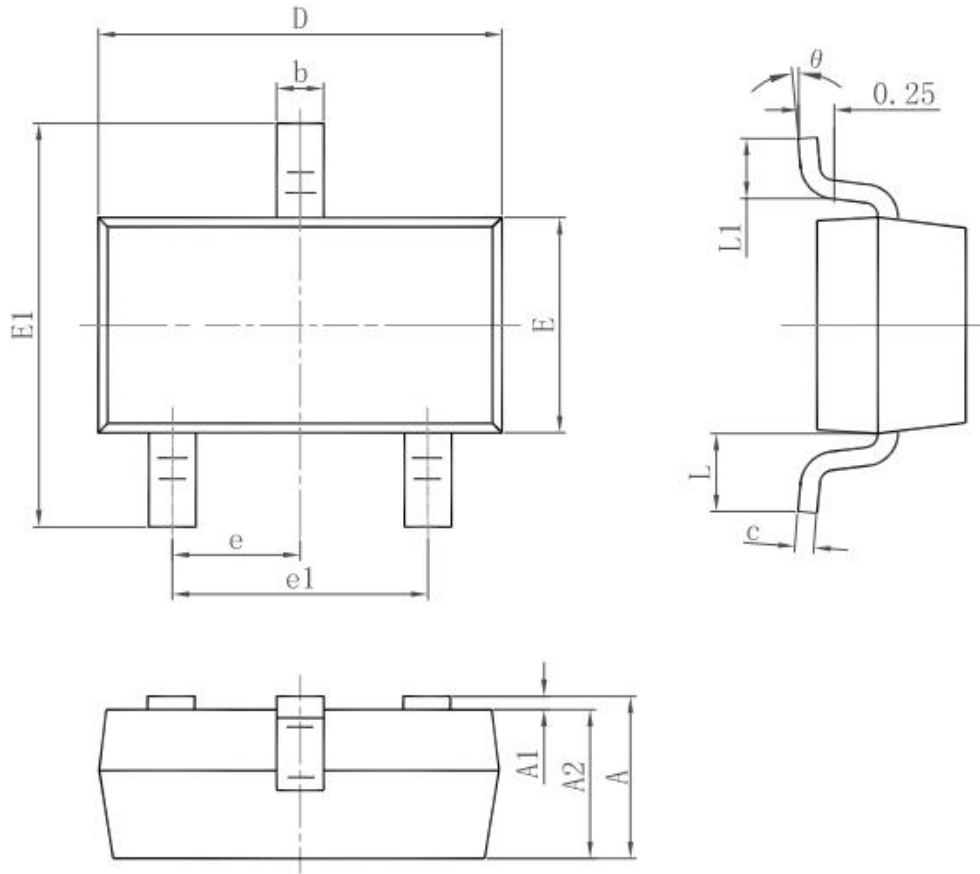


(2) Output Voltage vs. Ambient Temperature





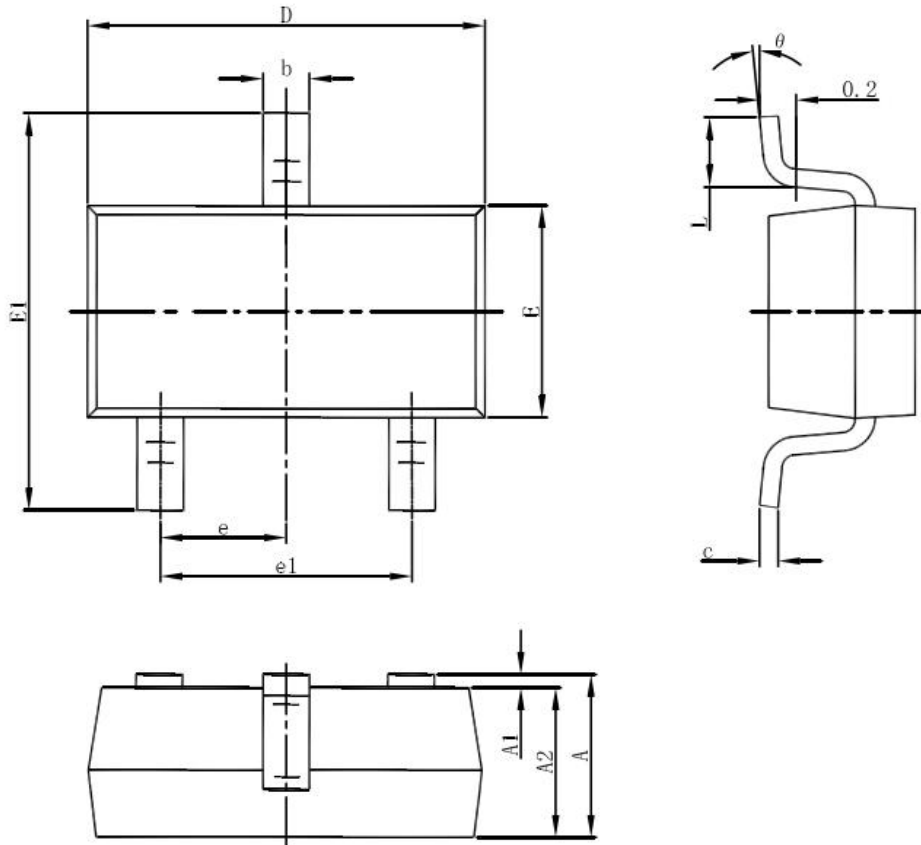
Package Information
3-pin SOT23 Outline Dimensions



| Symbol | Dimensions In Millimeters | | Dimensions In Inches | |
|--------|---------------------------|-------|----------------------|-------|
| | Min. | Max. | Min. | Max. |
| A | 0.900 | 1.150 | 0.035 | 0.045 |
| A1 | 0.000 | 0.100 | 0.000 | 0.004 |
| A2 | 0.900 | 1.050 | 0.035 | 0.041 |
| b | 0.300 | 0.500 | 0.012 | 0.020 |
| c | 0.080 | 0.150 | 0.003 | 0.006 |
| D | 2.800 | 3.000 | 0.110 | 0.118 |
| E | 1.200 | 1.400 | 0.047 | 0.055 |
| E1 | 2.250 | 2.550 | 0.089 | 0.100 |
| e | 0.950 TYP. | | 0.037 TYP. | |
| e1 | 1.800 | 2.000 | 0.071 | 0.079 |
| L | 0.550 REF. | | 0.022 REF. | |
| L1 | 0.300 | 0.500 | 0.012 | 0.020 |
| theta | 0° | 8° | 0° | 8° |



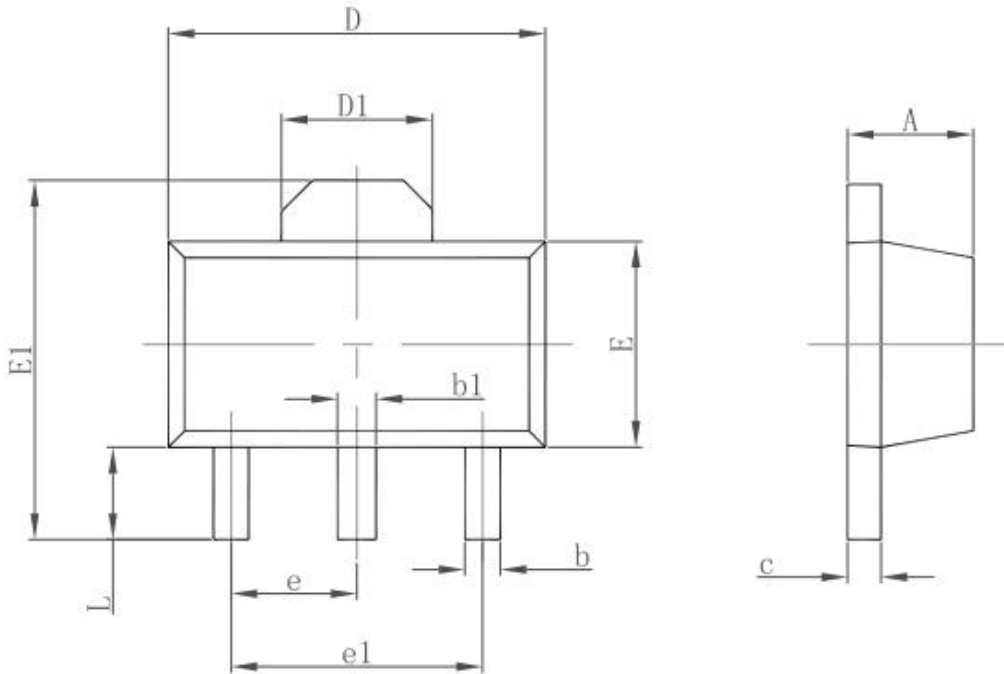
3-pin SOT23-3 Outline Dimensions



| Symbol | Dimensions In Millimeters | | Dimensions In Inches | |
|--------|---------------------------|-------|----------------------|-------|
| | Min | Max | Min | Max |
| A | 1.050 | 1.250 | 0.041 | 0.049 |
| A1 | 0.000 | 0.100 | 0.000 | 0.004 |
| A2 | 1.050 | 1.150 | 0.041 | 0.045 |
| b | 0.300 | 0.500 | 0.012 | 0.020 |
| c | 0.100 | 0.200 | 0.004 | 0.008 |
| D | 2.820 | 3.020 | 0.111 | 0.119 |
| E | 1.500 | 1.700 | 0.059 | 0.067 |
| E1 | 2.650 | 2.950 | 0.104 | 0.116 |
| e | 0.950(BSC) | | 0.037(BSC) | |
| e1 | 1.800 | 2.000 | 0.071 | 0.079 |
| L | 0.300 | 0.600 | 0.012 | 0.024 |
| θ | 0° | 8° | 0° | 8° |



3-pin SOT89 Outline Dimensions



| Symbol | Dimensions In Millimeters | | Dimensions In Inches | |
|--------|---------------------------|-------|----------------------|-------|
| | Min. | Max. | Min. | Max. |
| A | 1.400 | 1.600 | 0.055 | 0.063 |
| b | 0.320 | 0.520 | 0.013 | 0.020 |
| b1 | 0.400 | 0.580 | 0.016 | 0.023 |
| c | 0.350 | 0.440 | 0.014 | 0.017 |
| D | 4.400 | 4.600 | 0.173 | 0.181 |
| D1 | 1.550 REF. | | 0.061 REF. | |
| E | 2.300 | 2.600 | 0.091 | 0.102 |
| E1 | 3.940 | 4.250 | 0.155 | 0.167 |
| e | 1.500 TYP. | | 0.060 TYP. | |
| e1 | 3.000 TYP. | | 0.118 TYP. | |
| L | 0.900 | 1.200 | 0.035 | 0.047 |



CBC Microelectronics
<http://www.cbv.net>

TX6206
300mA Low Power LDO

IMPORTANT NOTICE

CBC Microelectronics Co., LTD reserves the right to make changes without further notice to any products or specifications herein. CBC Microelectronics Co., LTD does not assume any responsibility for use of any its products for any particular purpose, nor does CBC Microelectronics Co., LTD assume any liability arising out of the application or use of any its products or circuits. CBC Microelectronics Co., LTD does not convey any